

NAFLIC

National Association For Leisure Industry Certification

Standards & Related Documents Sub-Committee

TECHNICAL BULLETIN - JUNE 1993

059. Pinfari ZL Series Roller Coasters

Earlier this year NAFLIC members Morgan-Ward (NDT) Ltd sent in the attached photographs to the Secretary. The pictures show detail of fatigue cracks near a rail track joint of a Pinfari Looping Coaster from their ZL series. We are aware that the problem has been identified at the highest loaded joints of some other coasters of this design.

F.Lli Pinfari s.r.l. are aware of the problem and we believe that design changes may have been incorporated into new equipment.

It is the manufacturer's opinion that the highest loaded joints should be inspected visually by ride operators. There should also be periodic NDT. We are in agreement with this advice.

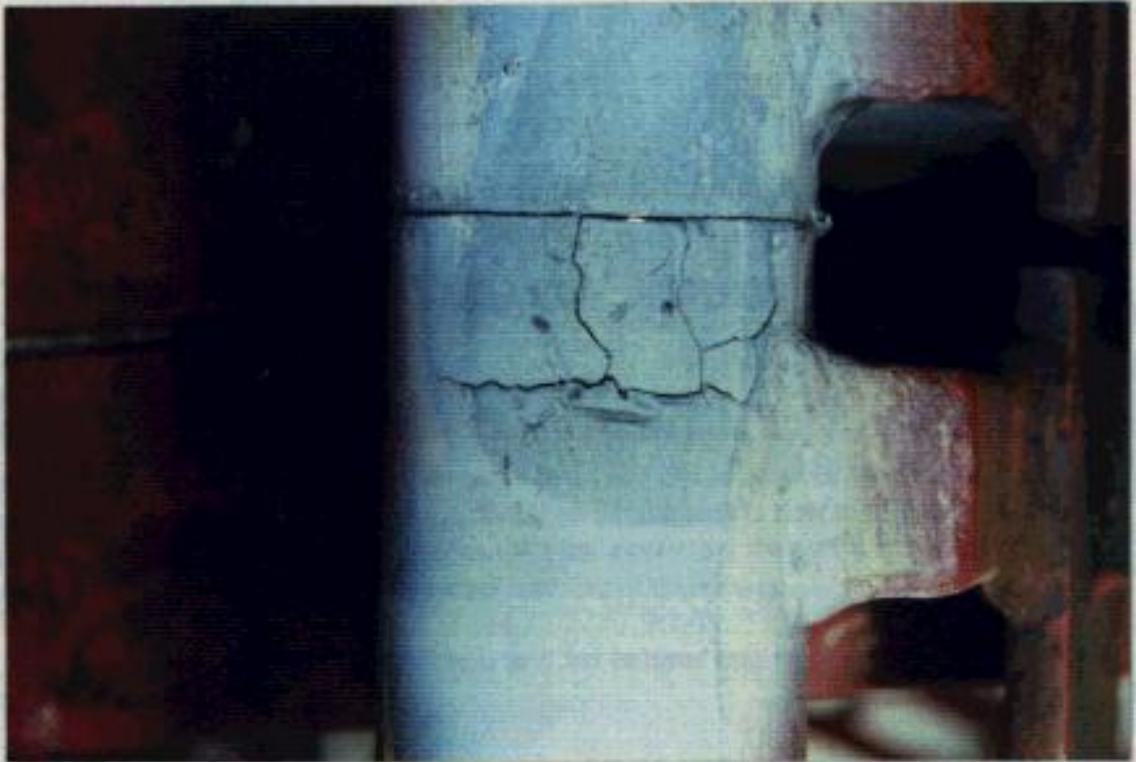


Figure 1. Cracked and pitted surface of the pipe.

